



PIG Water-Activated Flood Bags & Barriers

INSTRUCTIONS





PIG Water-Activated Flood Bags & Barriers

How To Use

- Place dry bags/barriers in the anticipated path of oncoming flood water
- Presoak your bags/barriers for best performance if a rush of water is expected or you need to build a stack
- As they come in contact with water, they will absorb and start to swell
- Bags/barriers reach their full height of 3.5" in 10 minutes if enough water is present
- *Note: not for use with salt water*

How To Stack

- **Barriers** — stack first two barriers wedge over wedge (the wedge is the narrower side of the barrier); then add a third unit on top to complete the wall (**fig. A**)
- **Bags** — lay bags end to end across the length of area to be protected; stagger the next course(s) of bags and stack in a pyramid pattern to desired height (**fig. B**)



fig. A

During first activation, white gel along stitching is normal.



How To Align Lengthwise

Barriers

- Place wider section of Barrier facing the water, as the smaller section (wedge) prevents it from rolling
- To avoid seepage, always position the overlapped sections so water flows away from barrier ends (**fig. C**)

Bags

- Squish ends together tightly to create a solid "wall" and minimize seepage (**fig. D**)

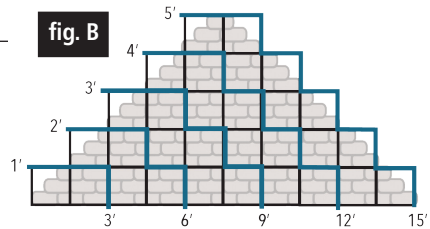


fig. B

To create a solid base, bags should be stacked in a 1:3 ratio. For every 1 foot of height needed, extend the base by 3 feet.



fig. C



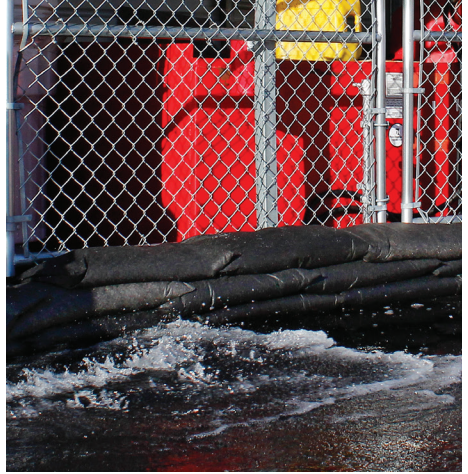
fig. D



Growth Chart

Item	Flood Bags	Flood Barriers
Activated Size	24"L x 12"W x 3.5"H	5' – 5'L x 6.5"W x 3.5"H 10' – 10'L x 6.5"W x 3.5"H 17' – 17'L x 6.5"W x 3.5"H
Activated Weight	32 lbs.	5' – 34 lbs. 10' – 68 lbs. 17' – 116 lbs.
Activated Absorbs	4 gallons	5' – 4.25 gallons 10': 8.5 gallons 17': 14.5 gallons

Once products are completely activated they are heavy like sandbags.



Helpful Tips

- During activation, check to make sure water flow is being directed as desired; adjustments may be necessary due to landscaping and other environmental factors
- Bags and barriers should be stacked higher than water level for stability and to prevent them from floating away
- Staining may occur on unfinished concrete or where surfaces are porous; remove from area when no longer needed
- On porous surfaces like unfinished concrete, use plastic barrier film in-between the ground and the bags/barriers to avoid seepage
- For use in cold climates, make sure bags/barriers are fully activated before freezing temperatures occur to assure best protection from snowmelt; do not move while frozen to prevent tearing, and do not allow road salt to contact the product
- Do **NOT** use around salt water, lime or calcium; these will cause the inner absorbent to release the water and deflate the product
- Do **NOT** cut bags or barriers; the inner contents will be exposed, making the product unusable
- Do **NOT** drive over bags and barriers

Storage and Shelf Life

- Keep on-hand for immediate deployment
- Unused bags and barriers have a 5+ year shelf life
- Store in sealed bag for maximum term

How To Dispose

- Throw away in trash
- Non-toxic
- Environmentally friendly





100% GUARANTEE

If you're not happy with your New Pig purchase, we'll refund every penny, including taxes and shipping. Even the return freight is on us!



New Pig

One Pork Avenue
Tipton, PA 16684-0304

newpig.com

North America: **1-800-468-4647**

Europe: **+31 (0)76 596 92 50**

China: **+86-21-400 921 5178**

UK: **0800 919 900**

Outside North America: **+1-814-684-0101**

PIG, PIG logo are registered trademarks in USA and other countries. See tm.newpig.com

502815 / 358873