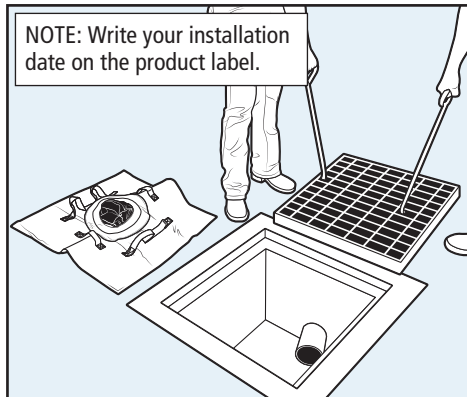
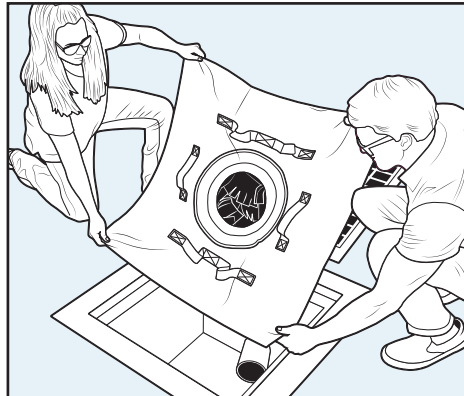


PIG Frameless Storm Drain Filter

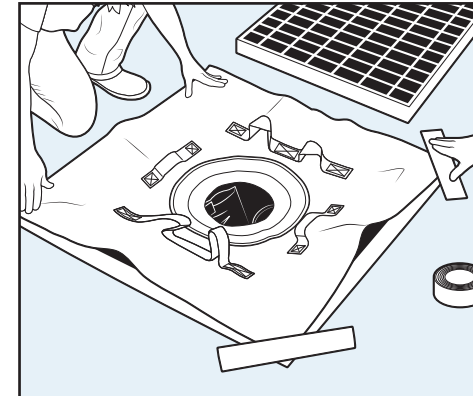
Instructions



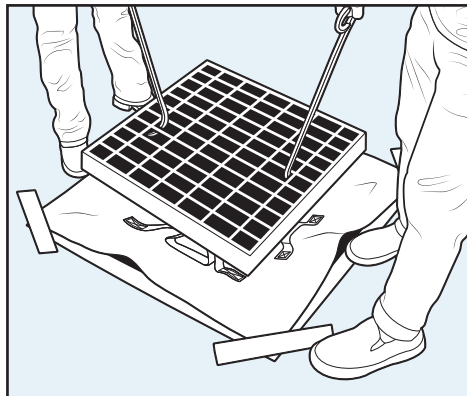
1. Remove drain grate and clean any sediment or debris from grate lip and ground surface.



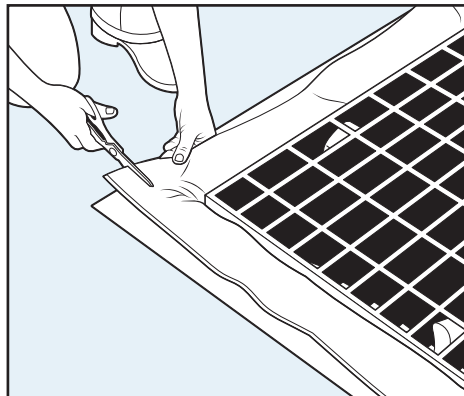
2. Place Drain Filter over opening. Filter fabric should overlap drain at least 7-8cm on all



3. Tape down all corners to temporarily hold Drain Filter in place.



4. Replace grate, keeping it level as you lower evenly onto Drain Filter.



5. Remove tape and trim excess fabric, keeping roughly 7-8cm of material on all



TIP: When it's time to empty or changeout your filter, remove the grate and filter at the same time by feeding grate hook through hi-viz strap before lifting.